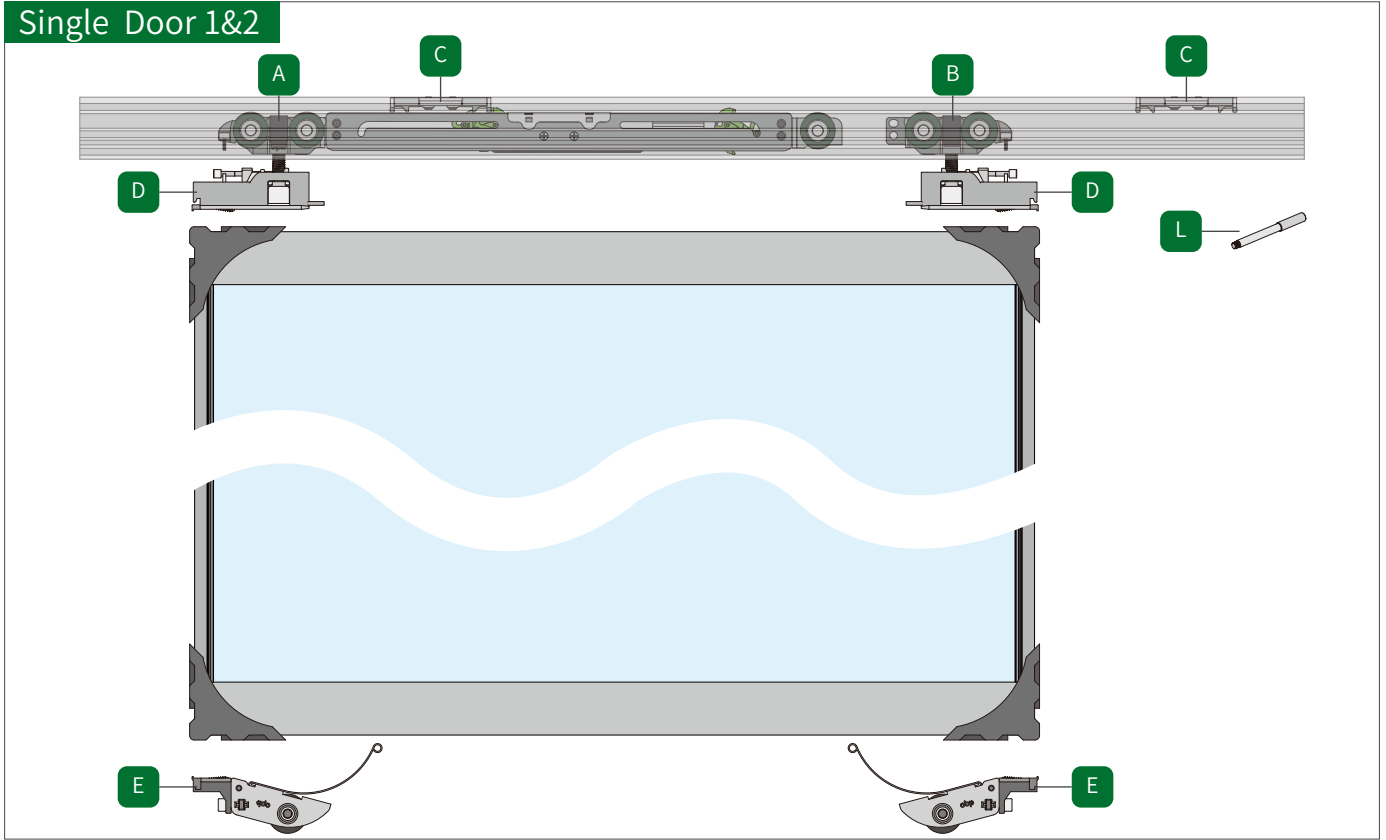
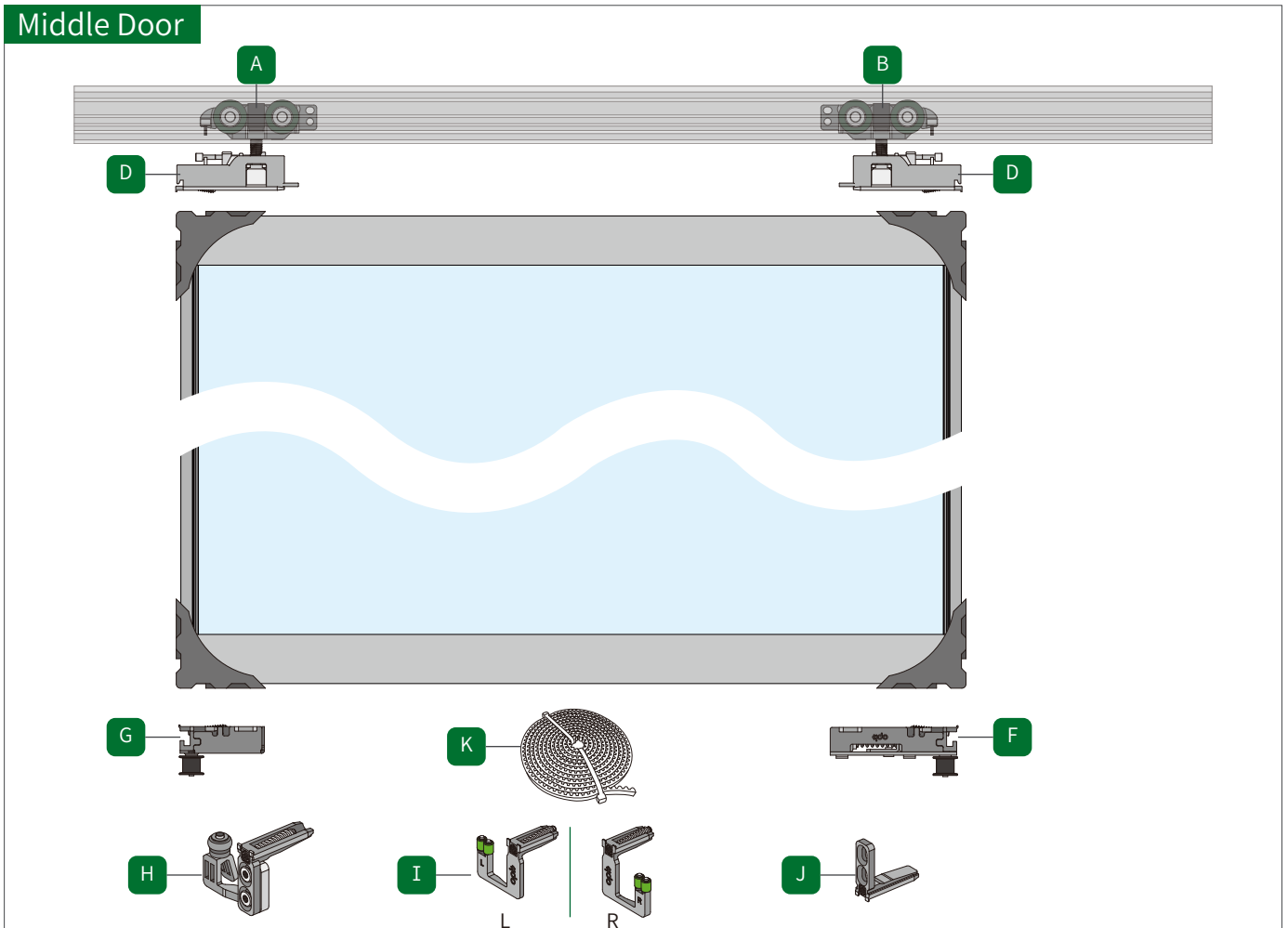


opk Perfect Slim System Stacking 3 Doors Mounting Instruction

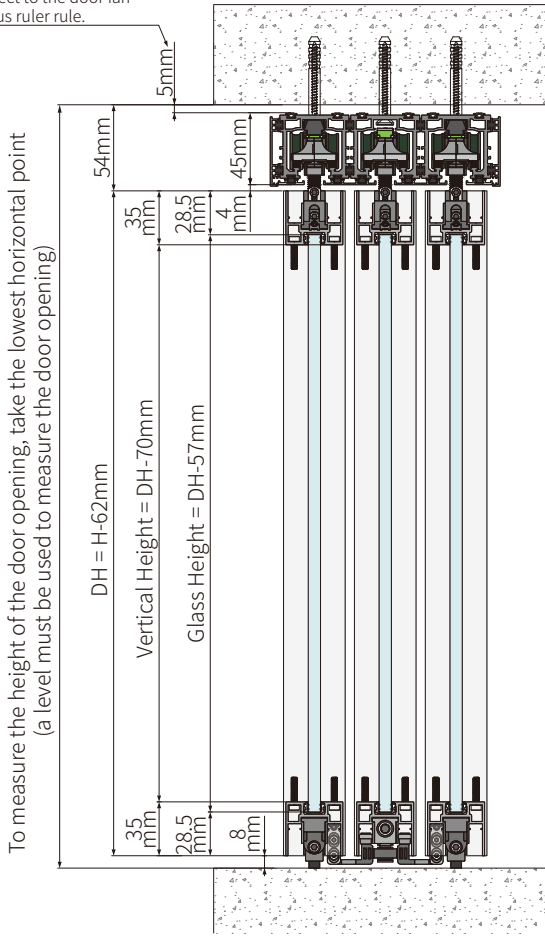
Single Door 1&2



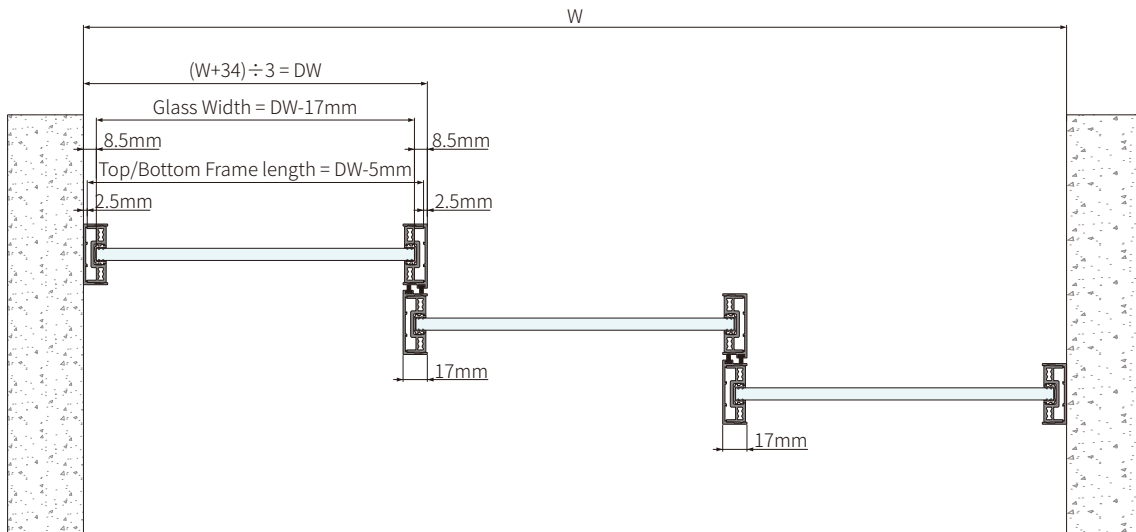
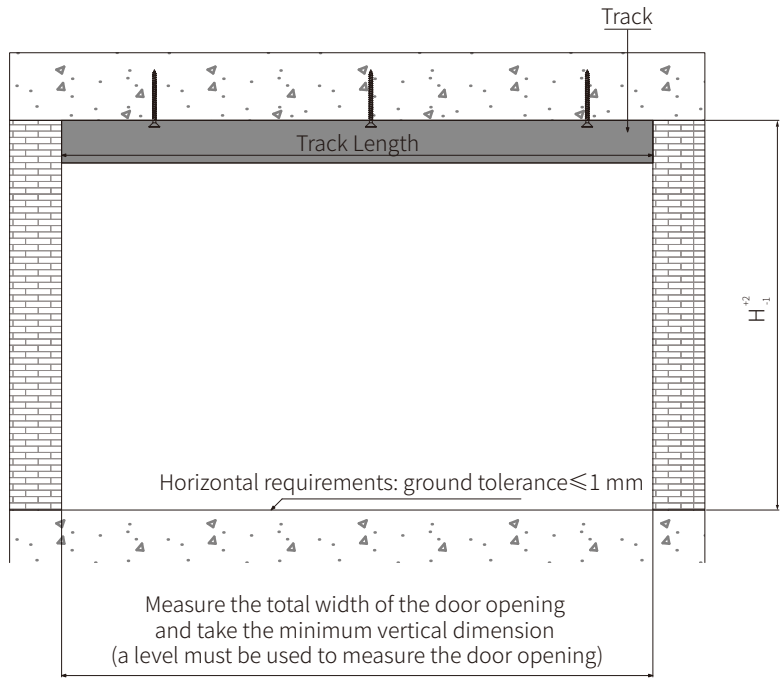
Middle Door



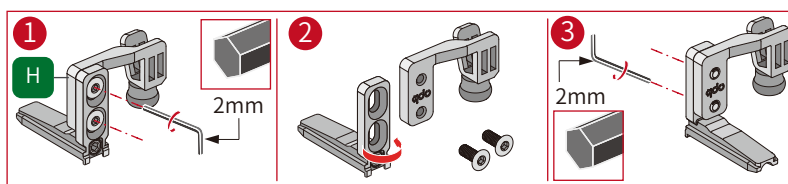
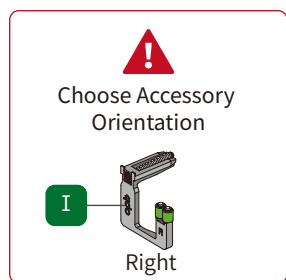
This 5mm space is used to adjust the track level, The installation size is subject to the door fan minus ruler rule.



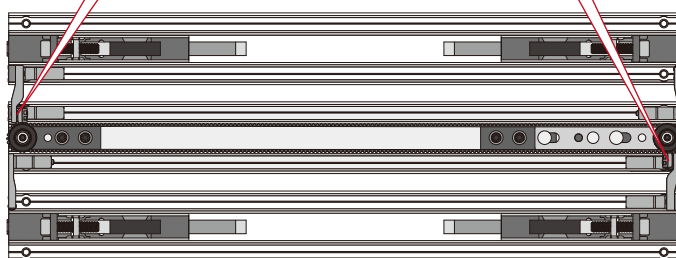
To measure the height of the door opening, take the lowest horizontal point (a level must be used to measure the door opening).



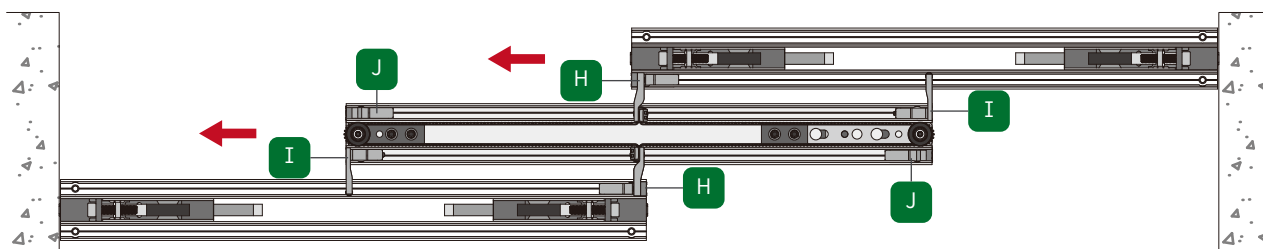
Three Linkage (Left Opening) Accessories Diagram



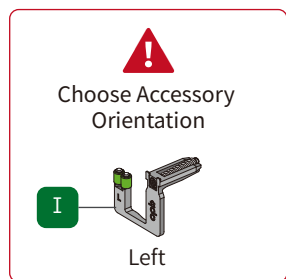
Single Door 2
Middle Door
Single Door 1



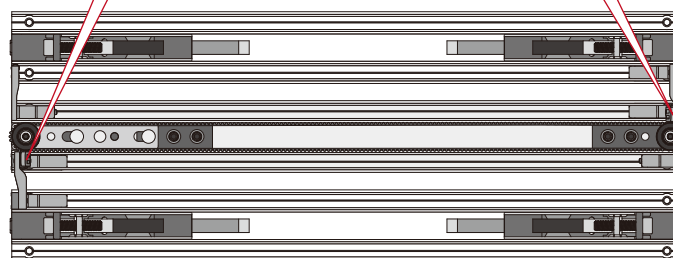
View from the bottom: Door opening to the left



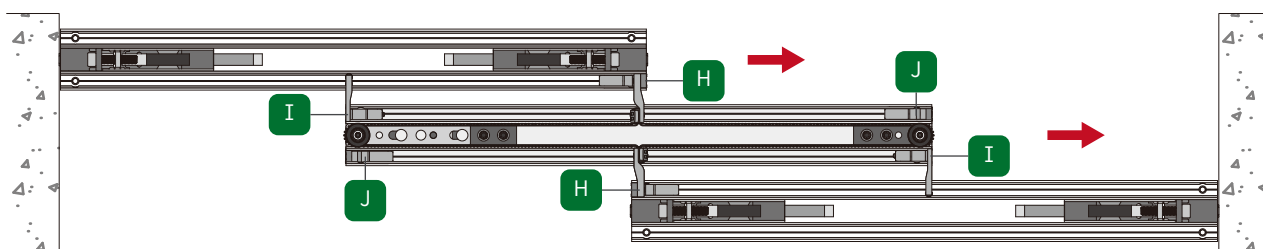
Three Linkage (Right Opening) Accessories Diagram



Single Door 2
Middle Door
Single Door 1



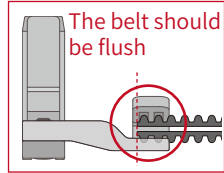
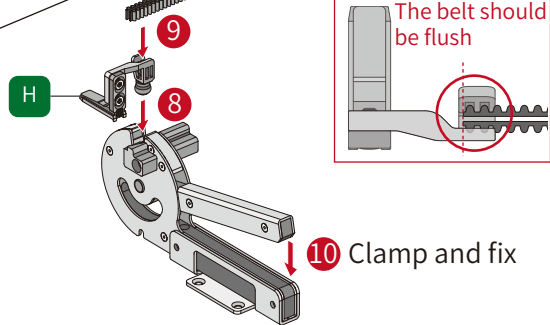
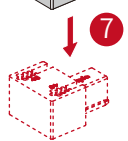
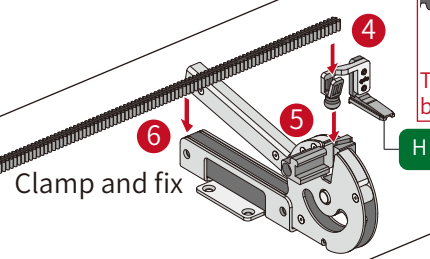
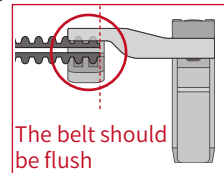
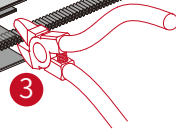
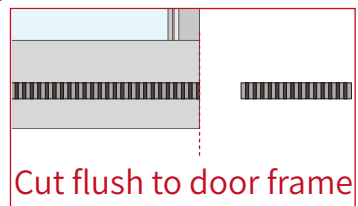
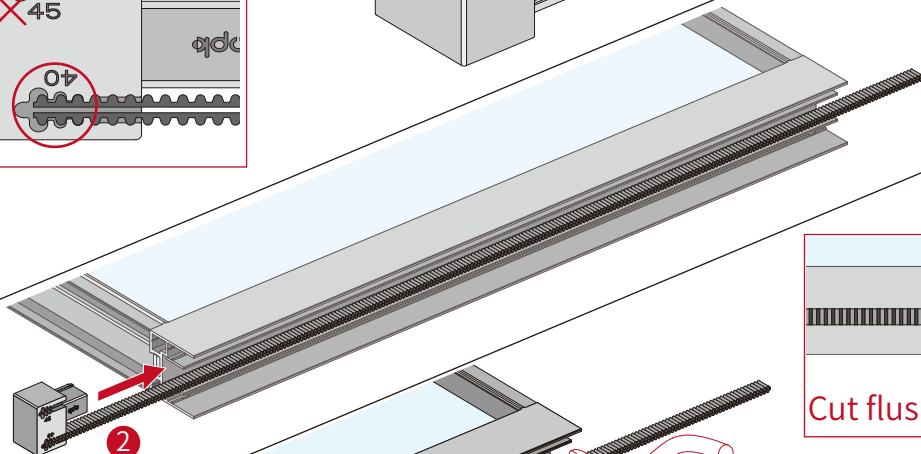
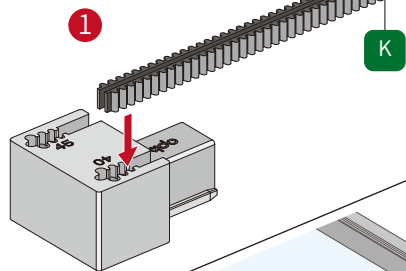
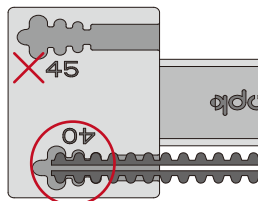
View from bottom: Door opening to the right



Take the front right door as an example, you can choose the opening direction according to your needs

1 Cut Belt Install Belt Accessories

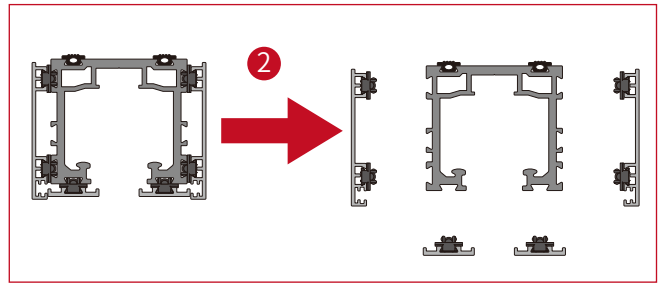
According to the width of the top and bottom horizontal profiles of the door panel, use of belt molds 40



2 Cut the Profiles Disassemble the Profiles

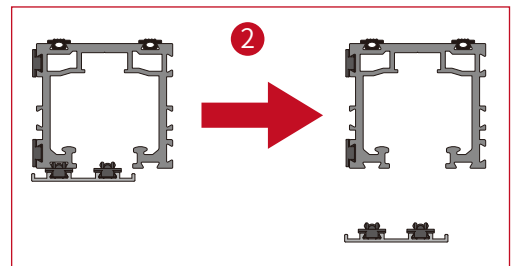
Profile 1

⚠ Cutting from the uneven side of the profiles

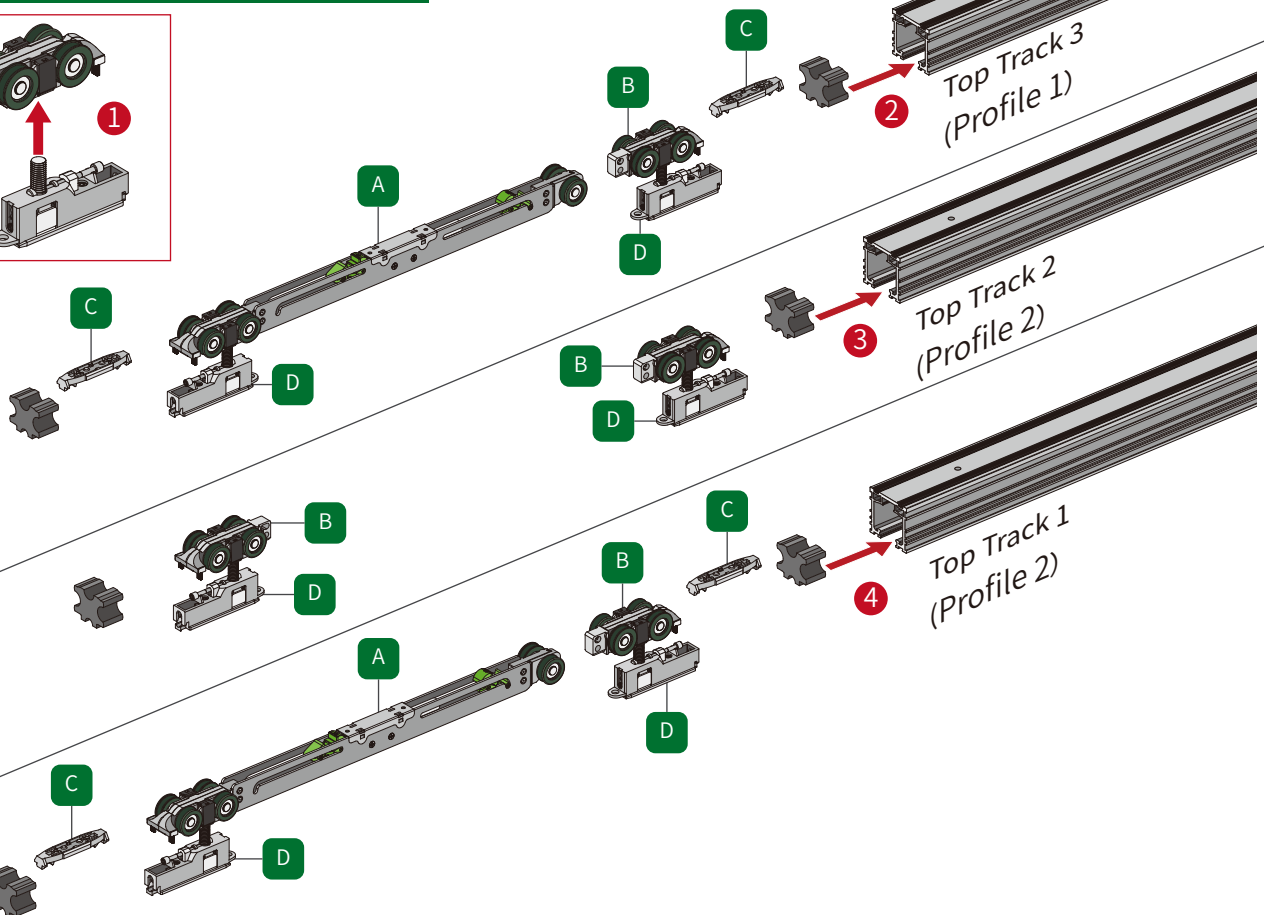
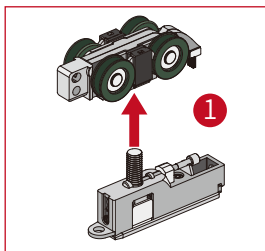


Profile 2

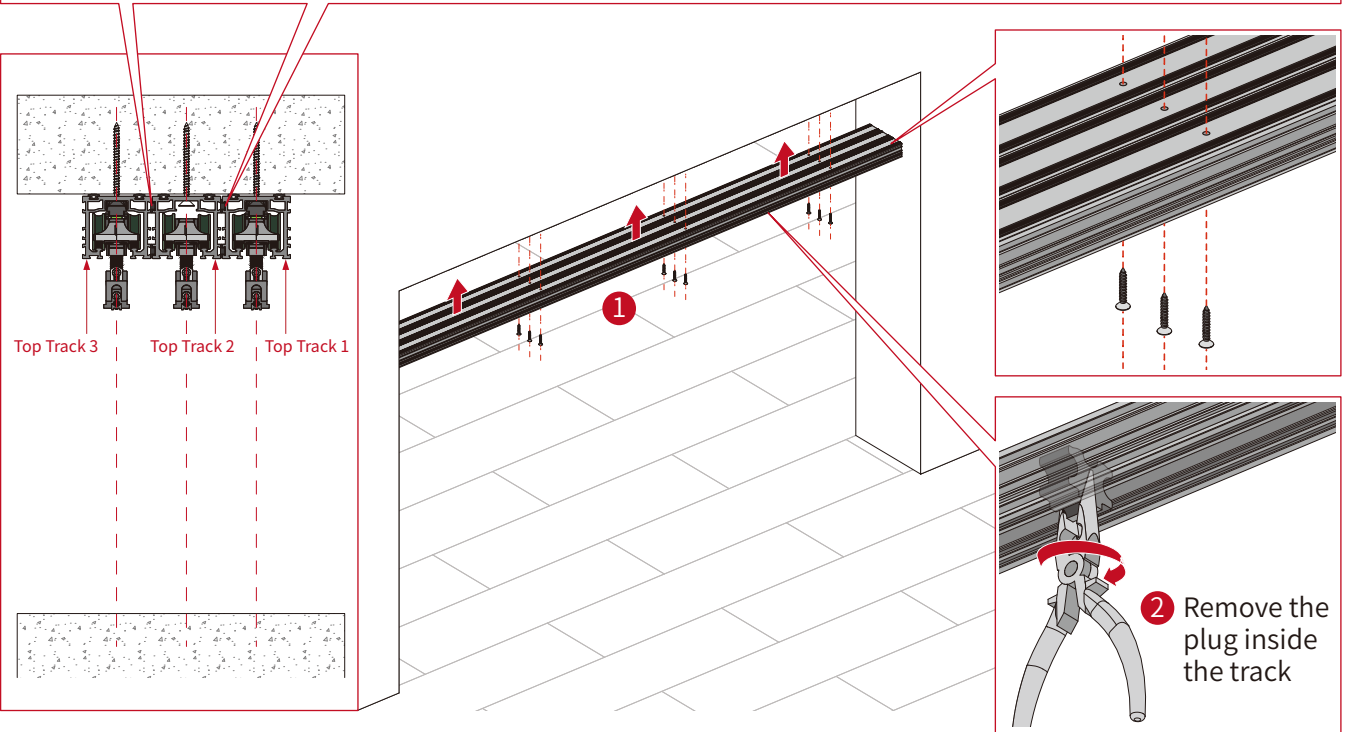
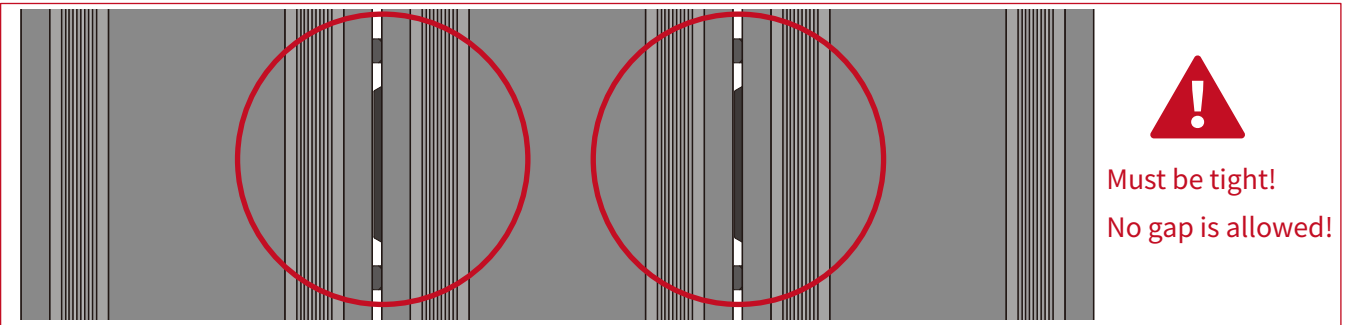
⚠ Cutting from the uneven side of the profiles



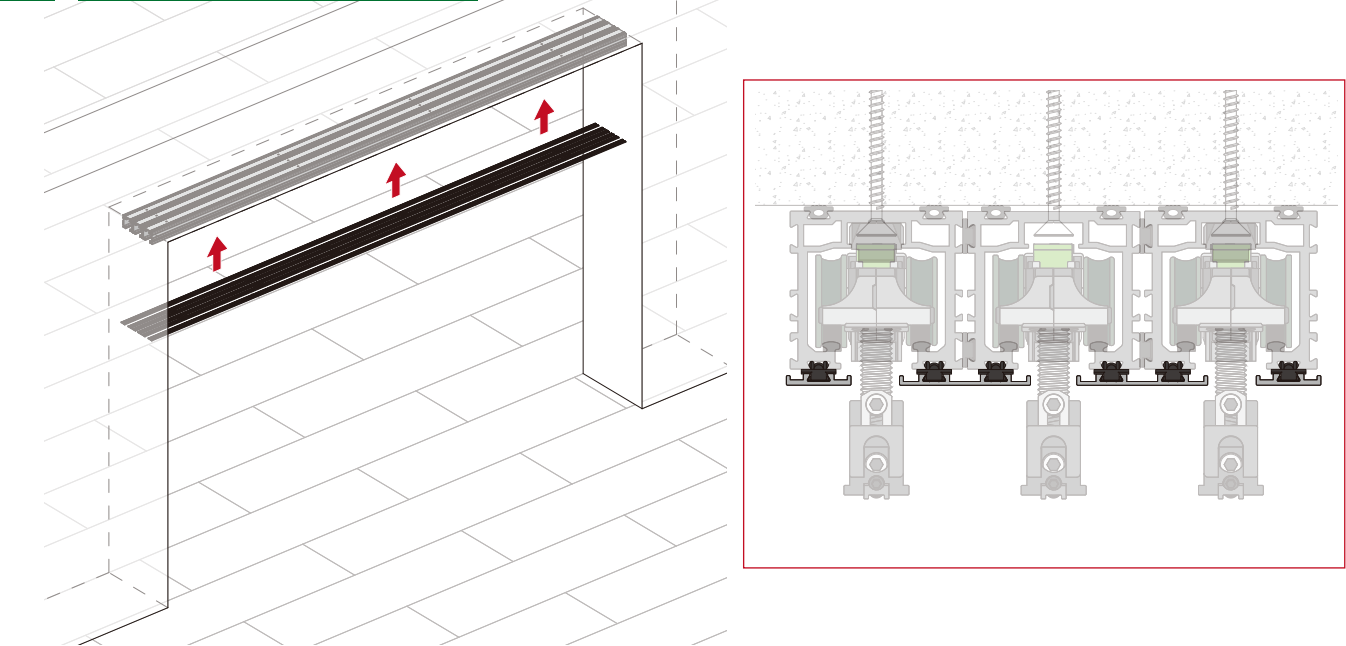
3 Install Rollers and Activators



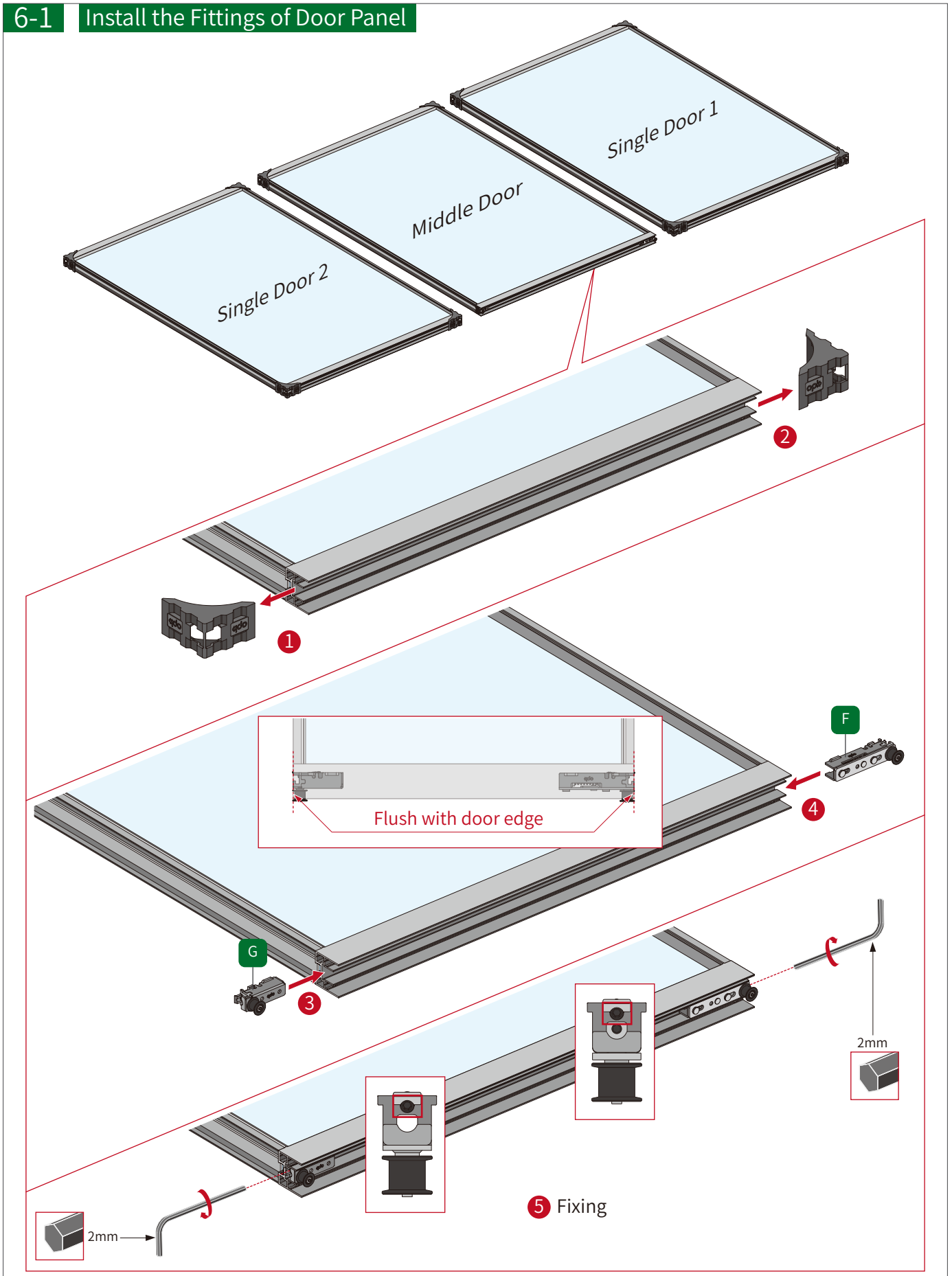
4 Install the Top Track



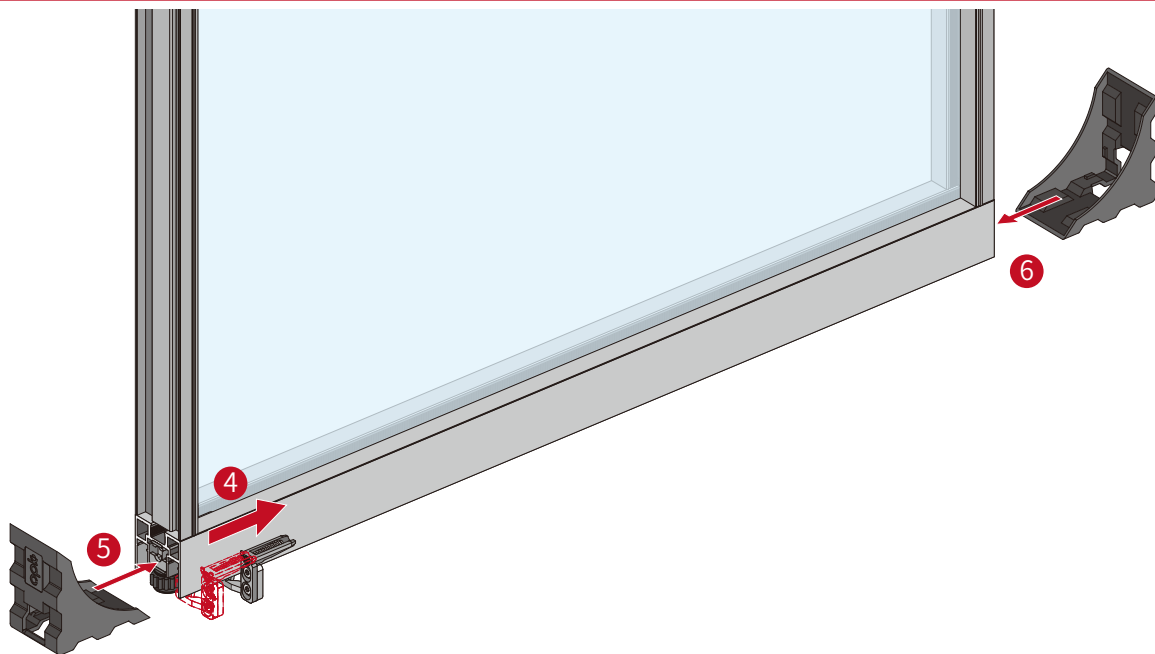
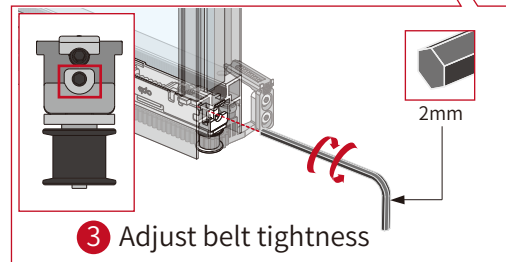
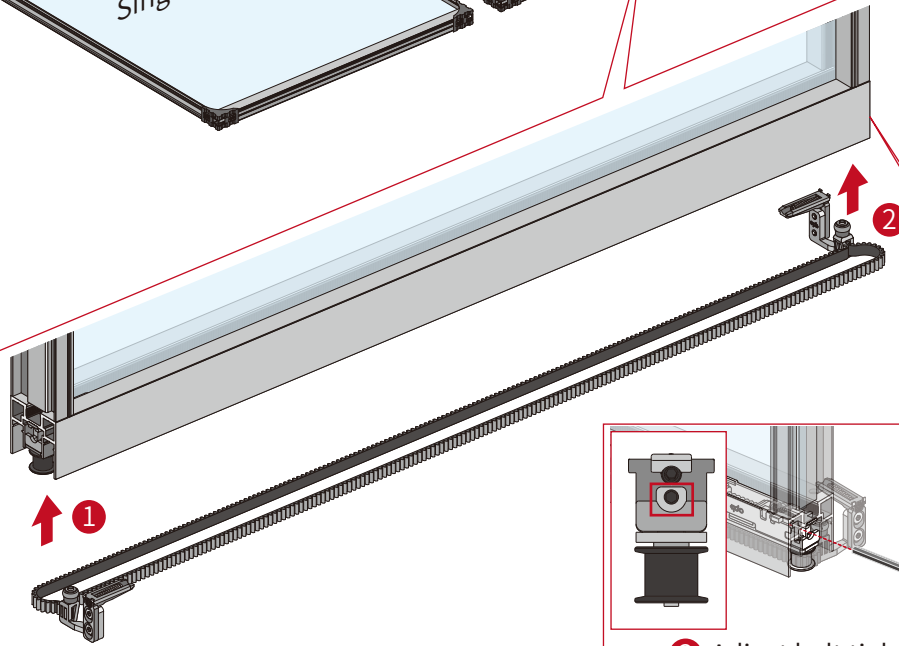
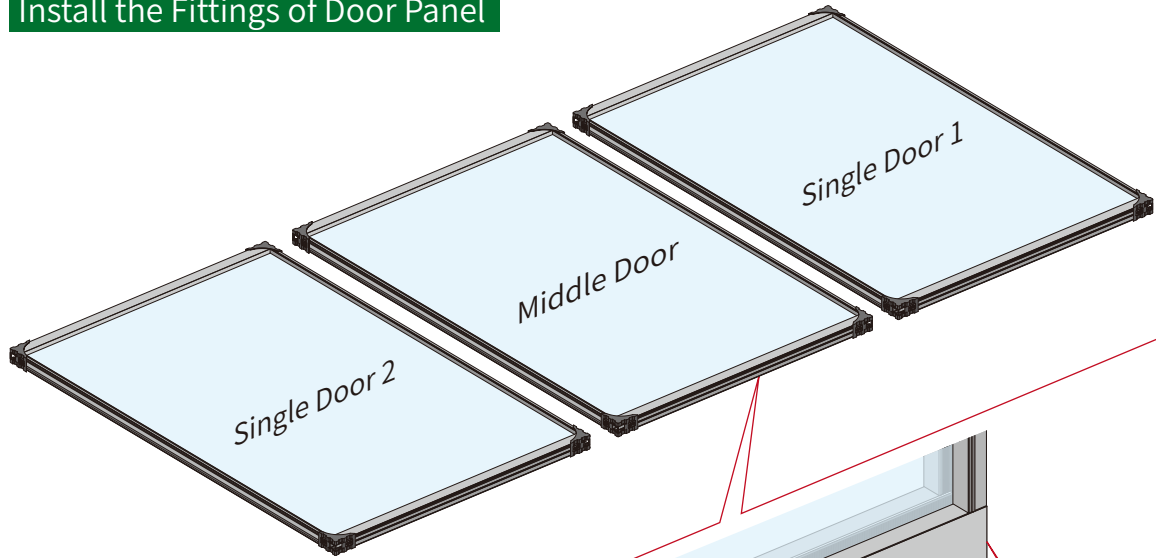
5 Install the Covers of Track



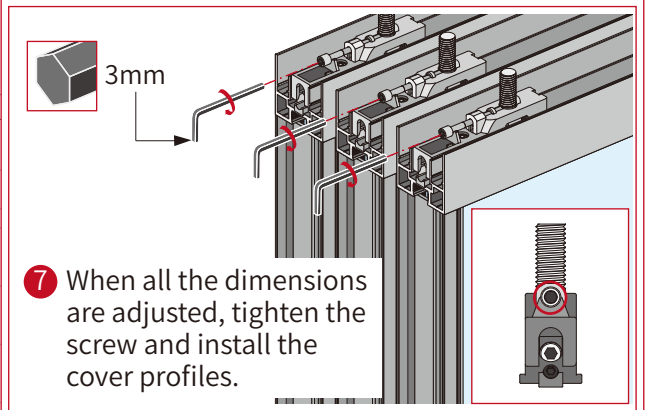
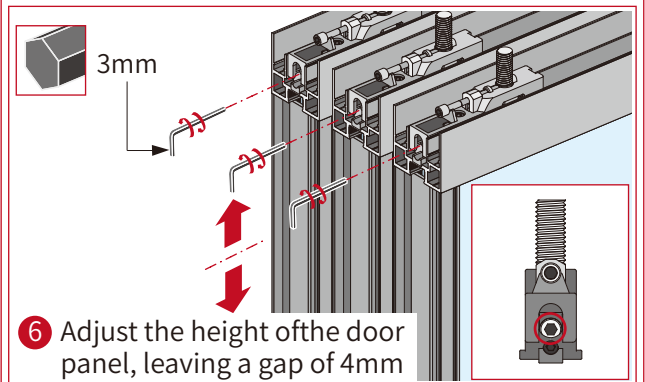
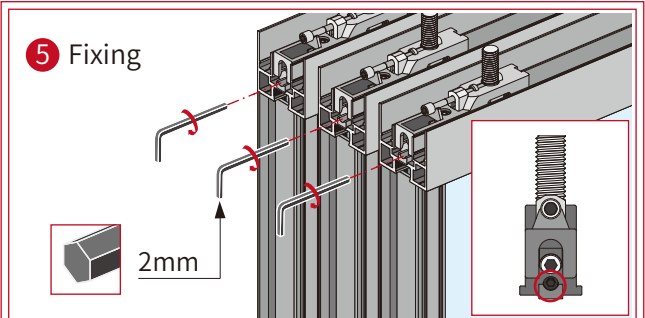
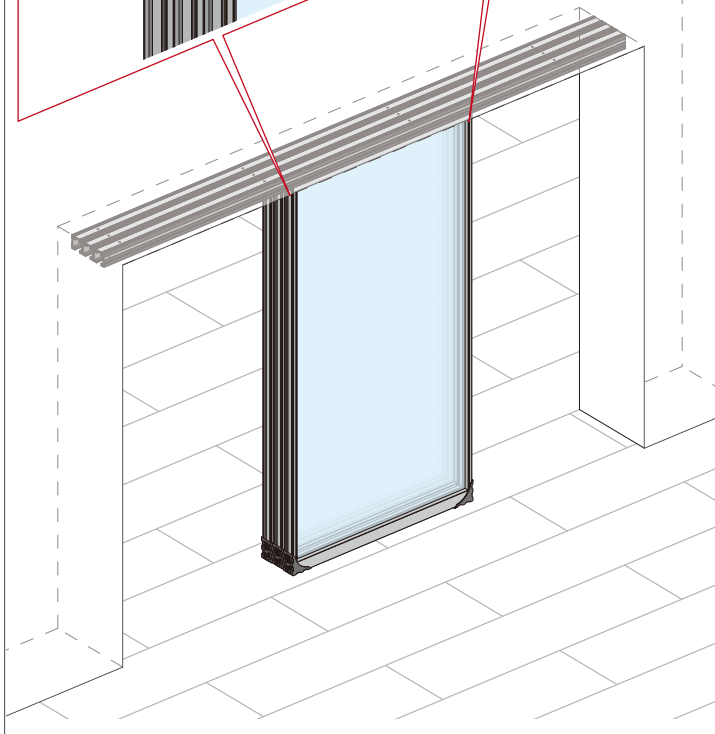
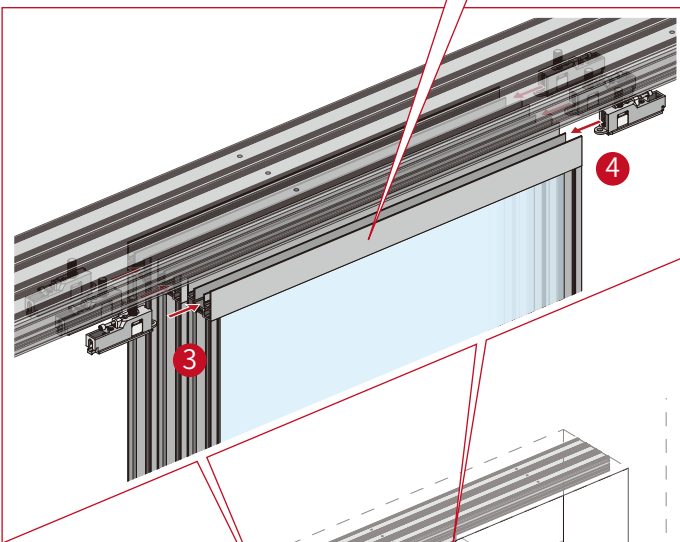
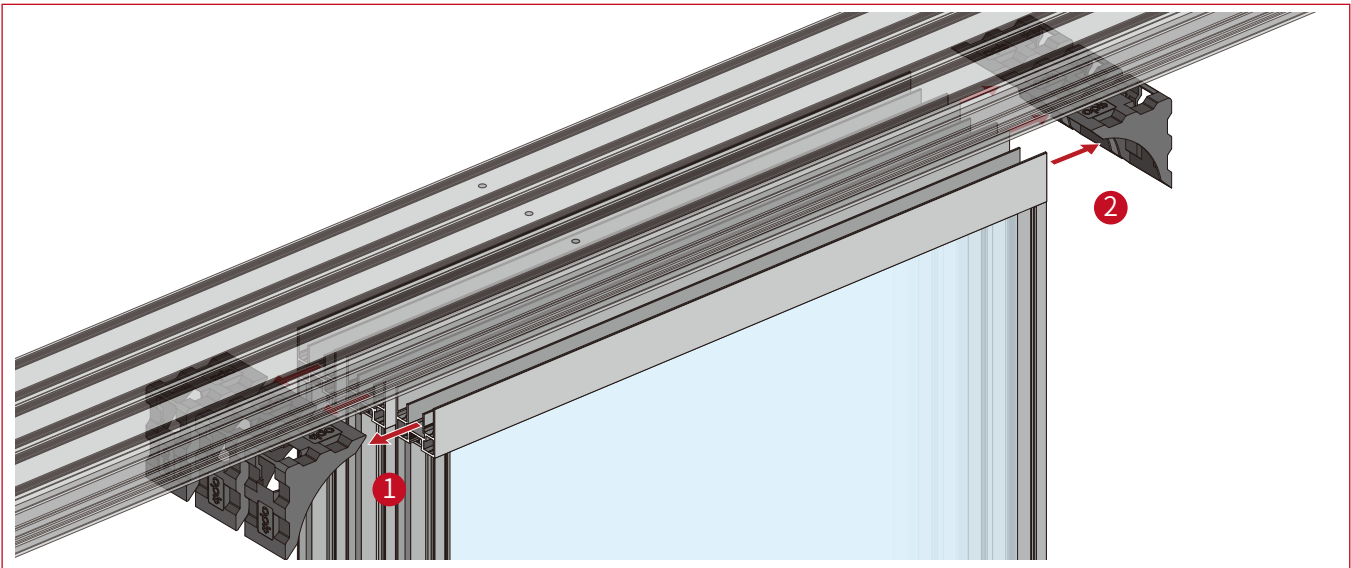
6-1 Install the Fittings of Door Panel



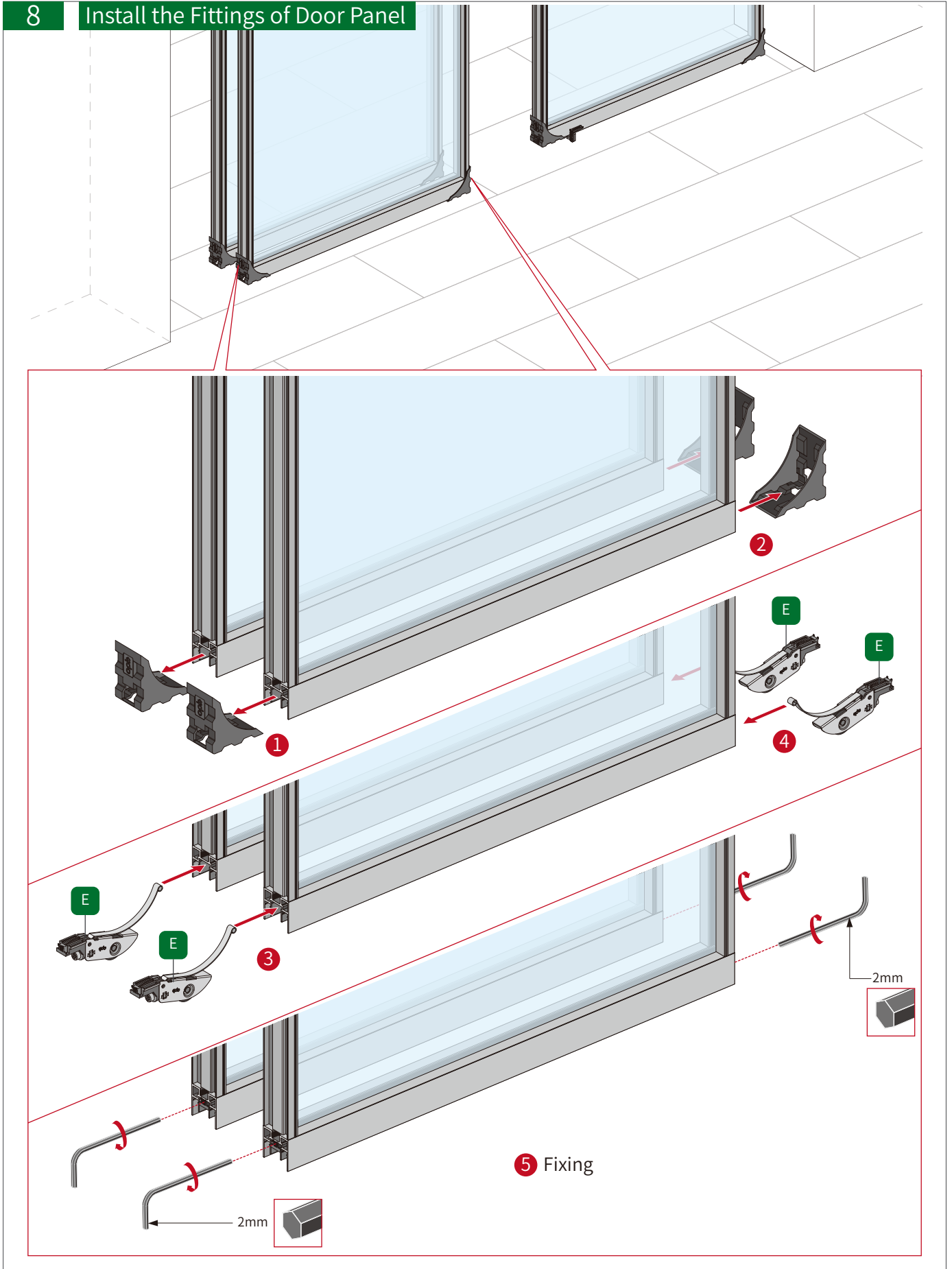
6-2 Install the Fittings of Door Panel



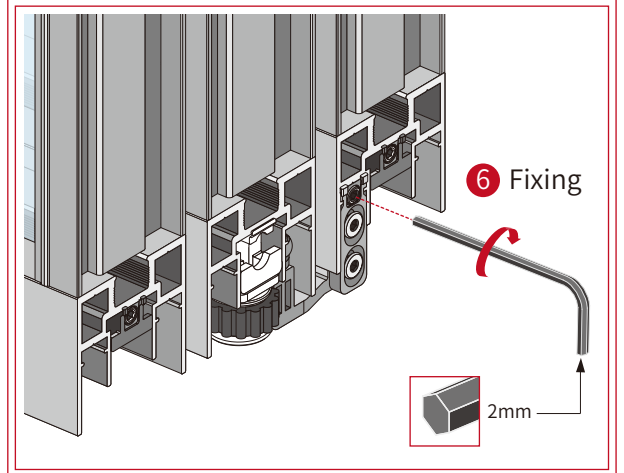
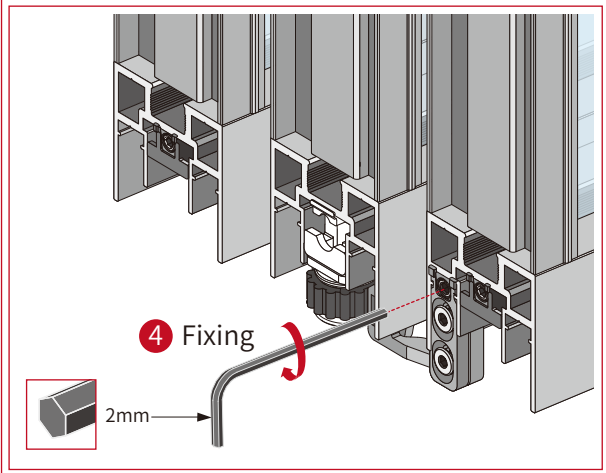
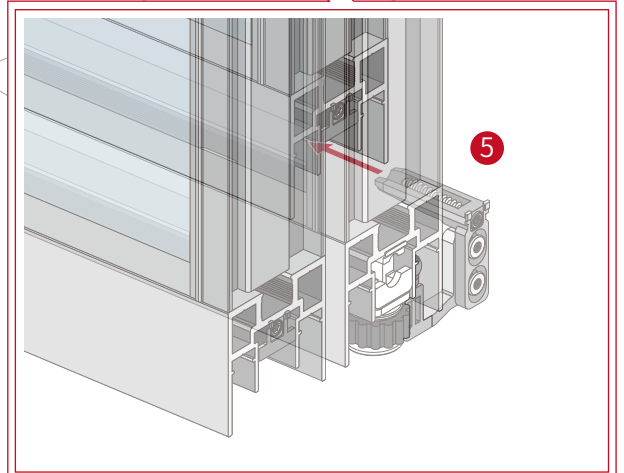
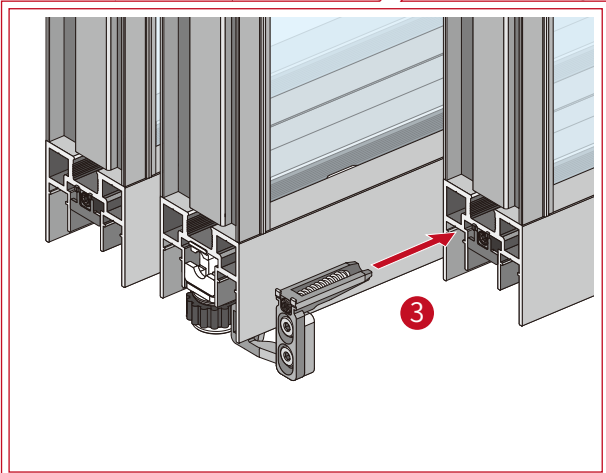
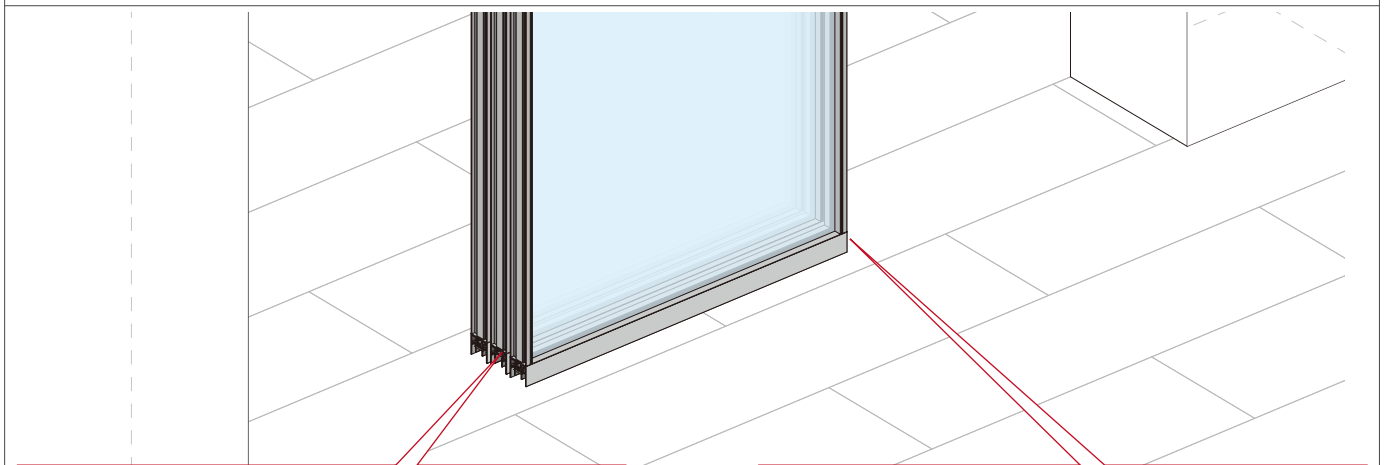
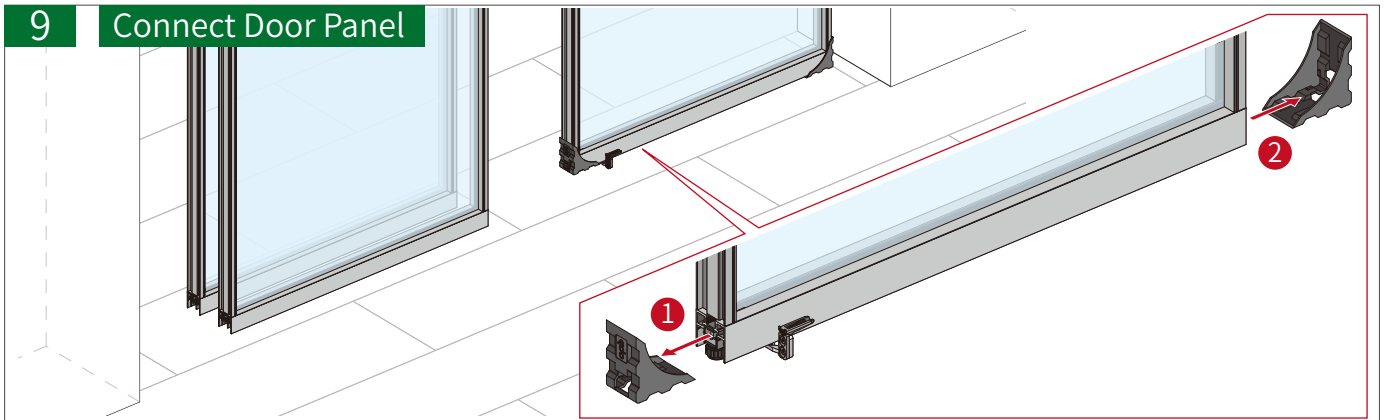
7 Install the Door Panel



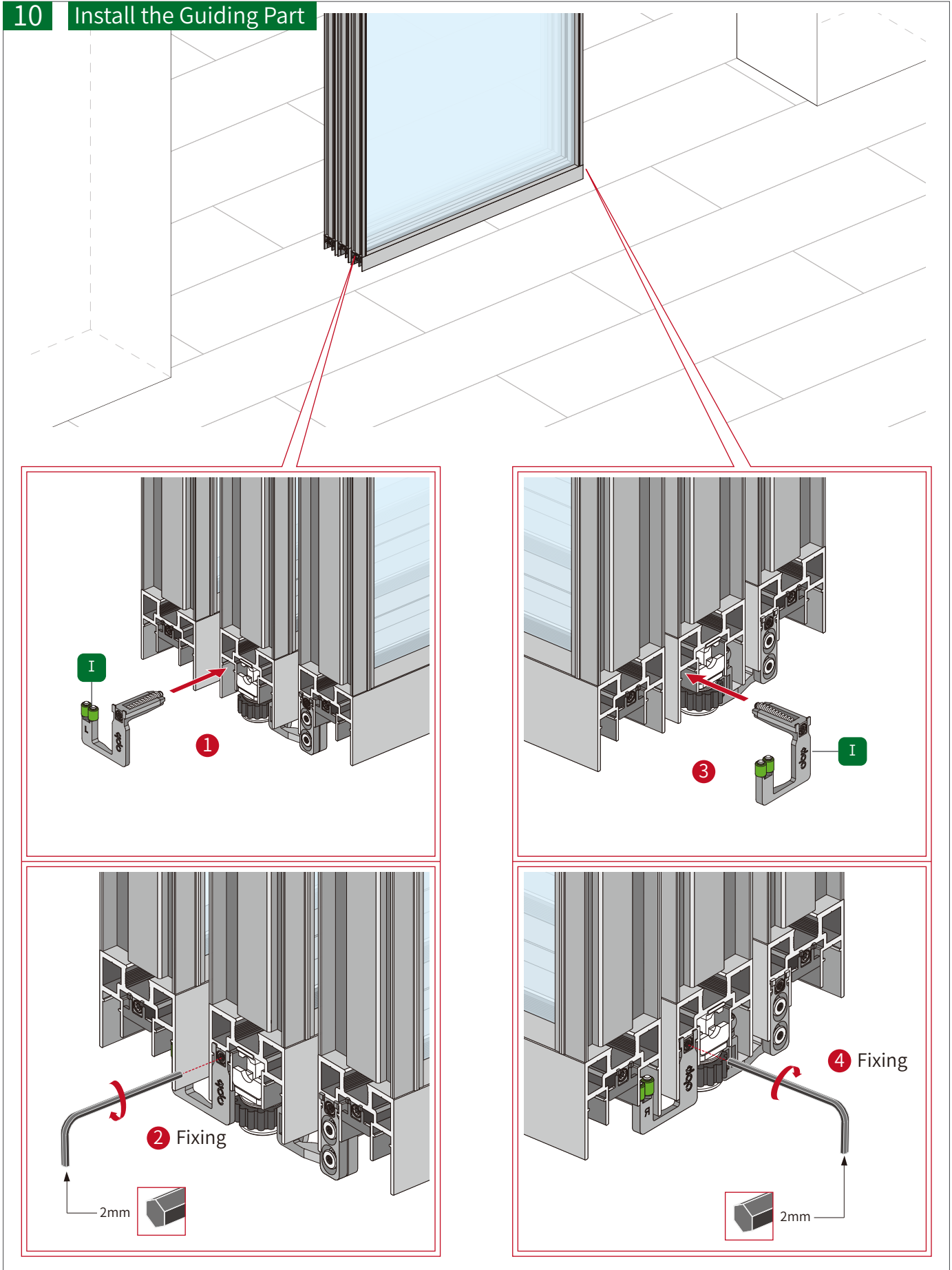
8 Install the Fittings of Door Panel



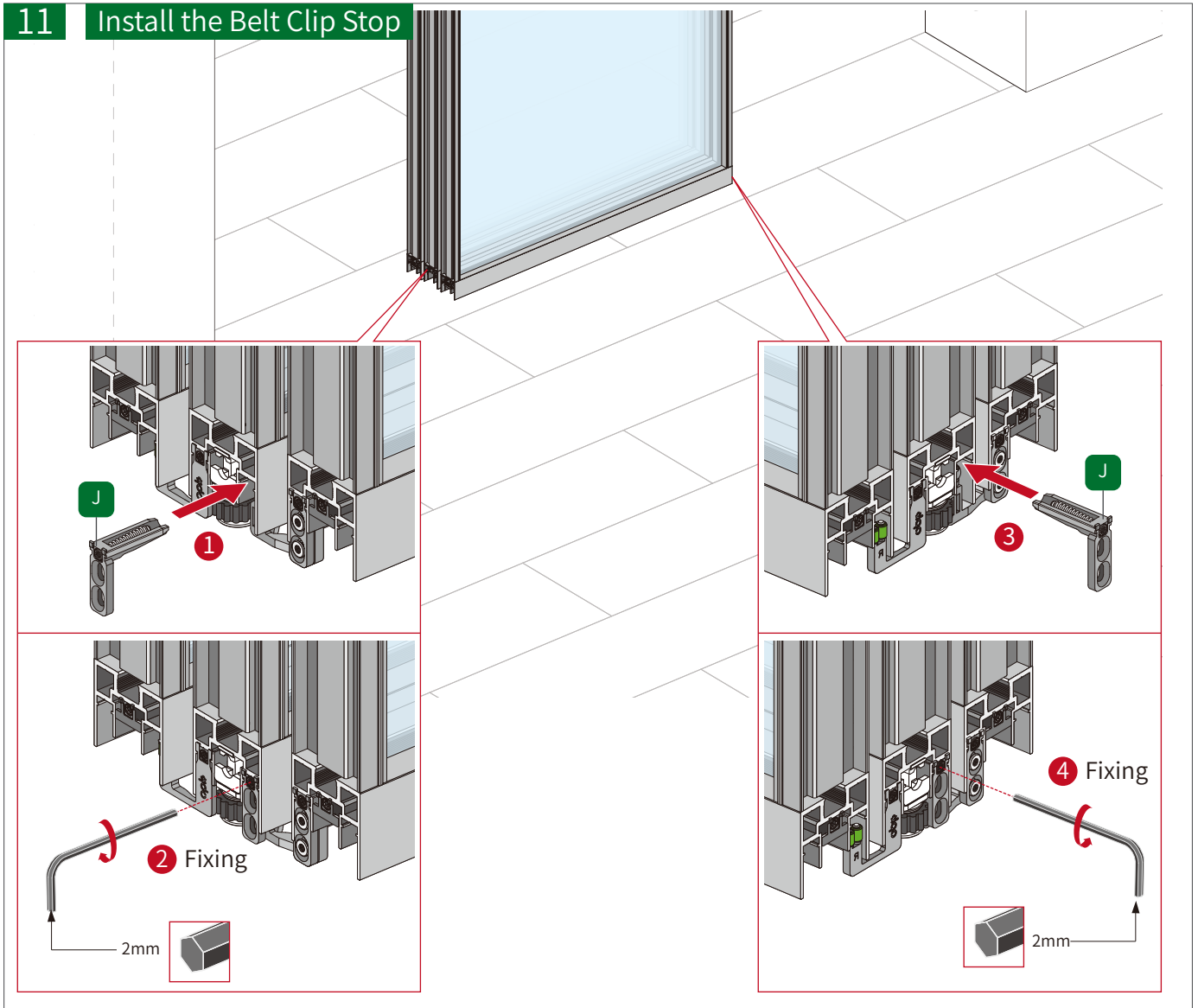
9 Connect Door Panel



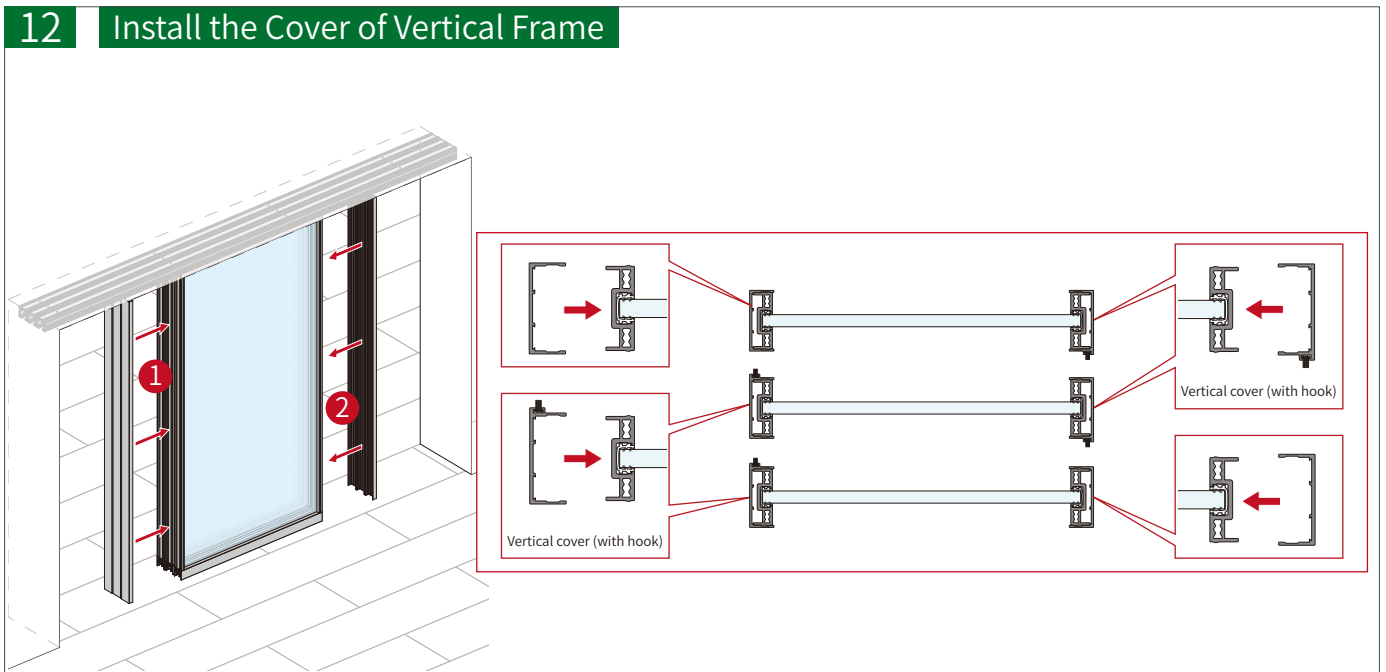
10 Install the Guiding Part



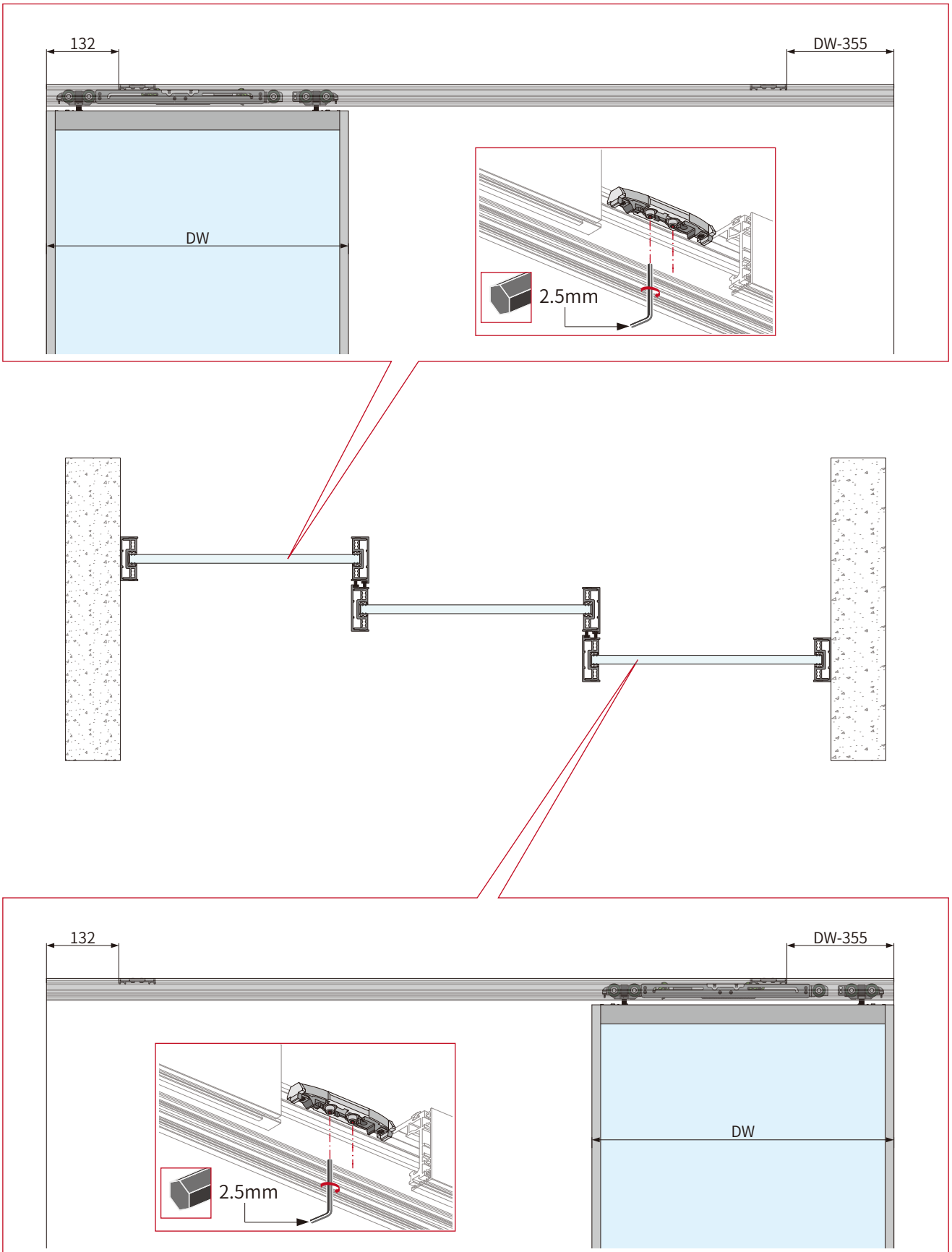
11 Install the Belt Clip Stop



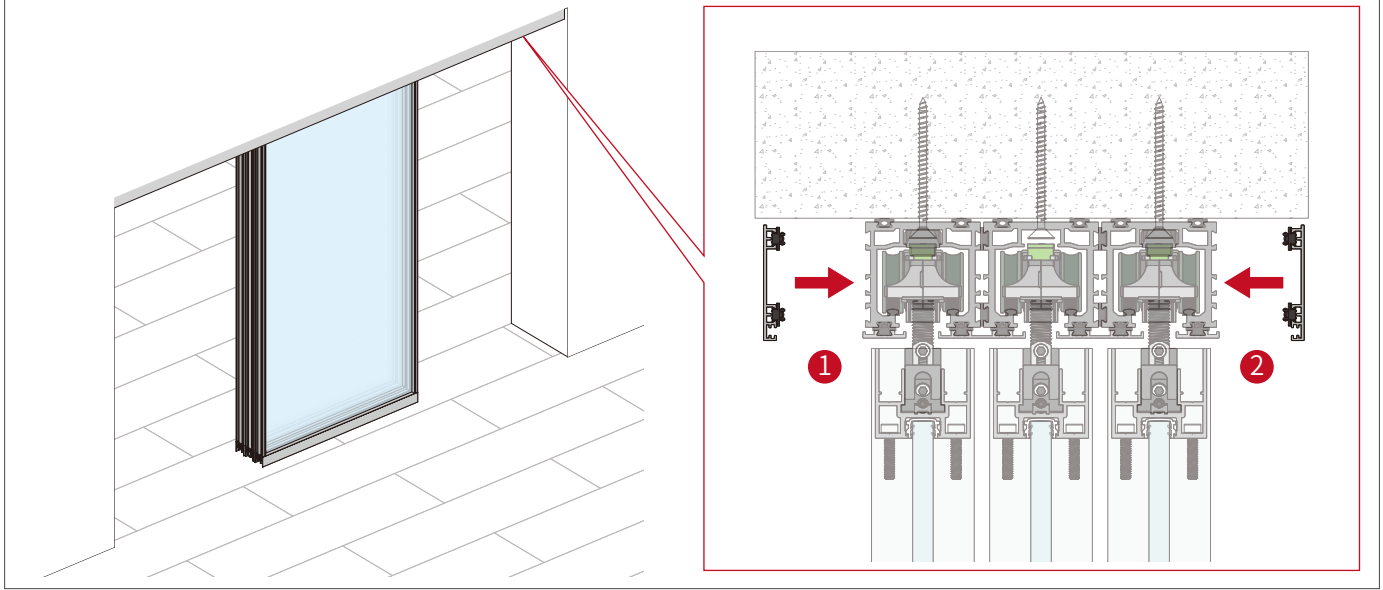
12 Install the Cover of Vertical Frame



13 Activator Position

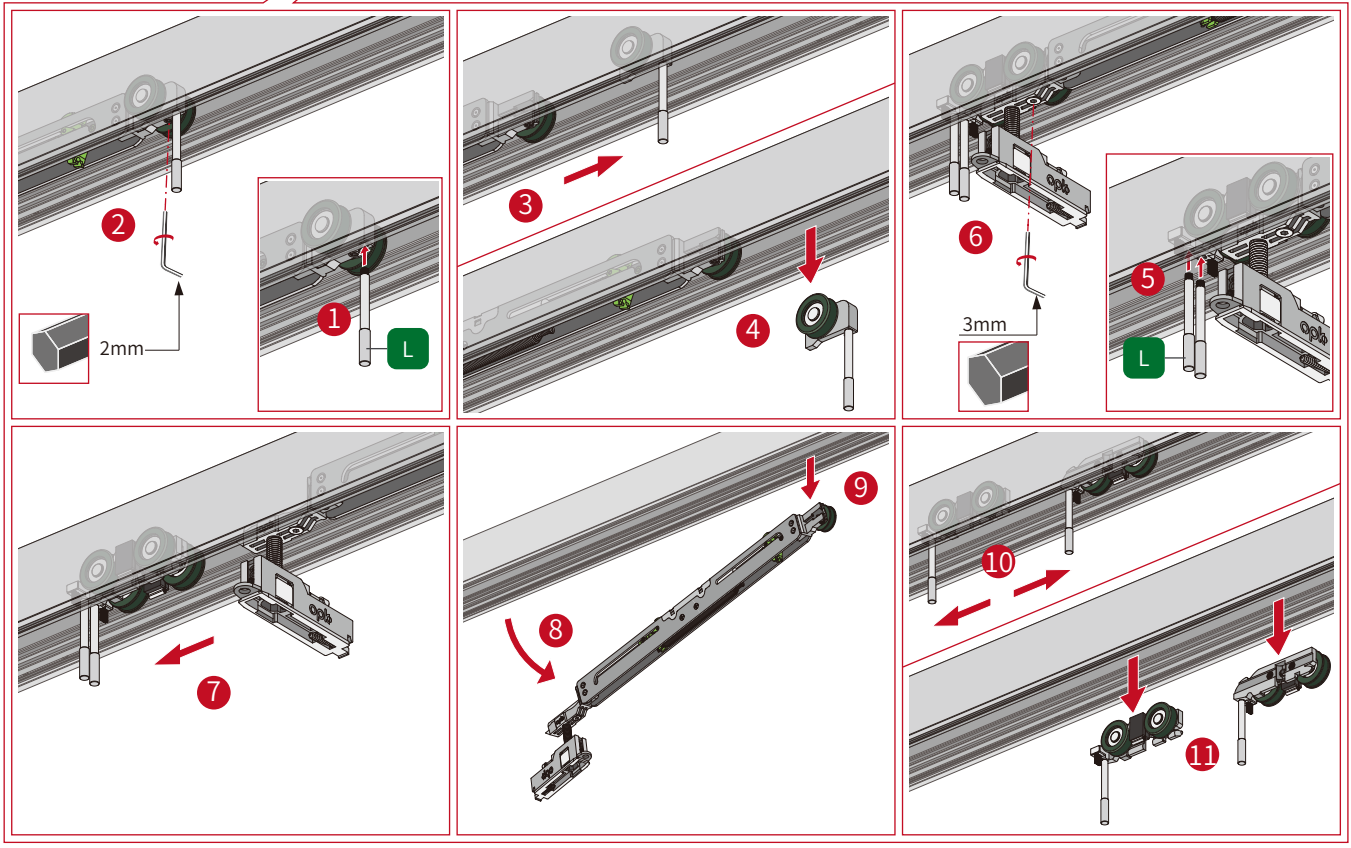
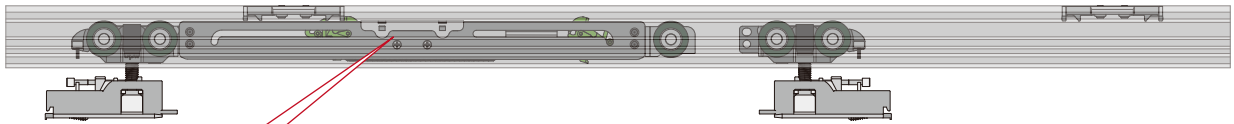


14 Install the Cover of Track



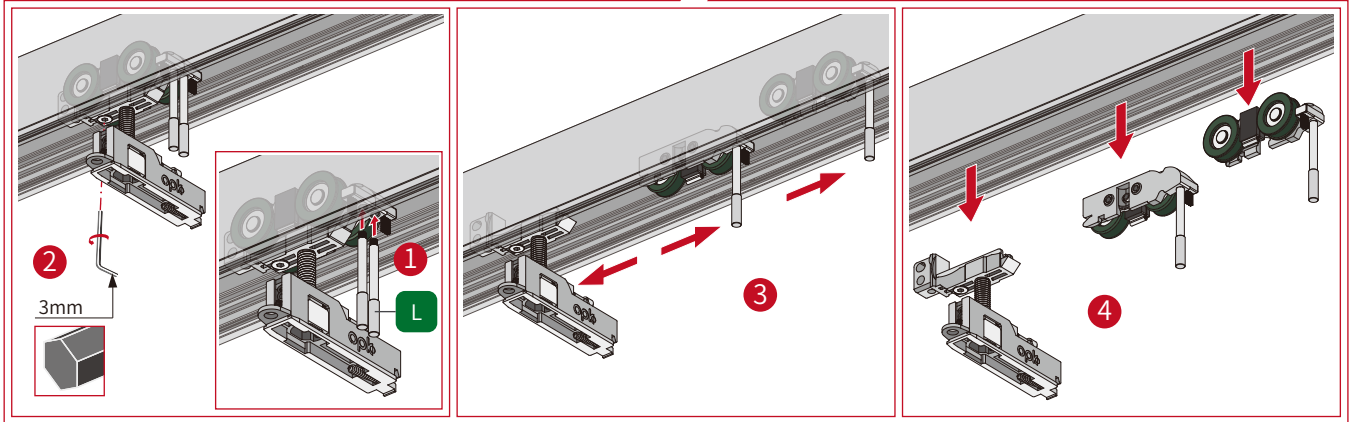
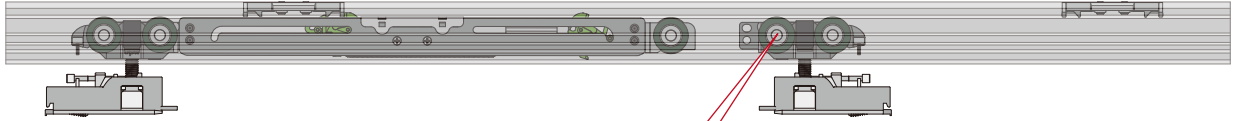
Maintenance & Replacing

Disassemble Running Part



Maintenance & Replacing

Disassemble Running Part



Maintenance & Replacing

Replacing Activator

